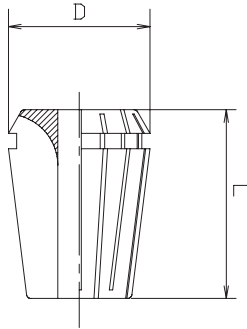


**SZ 0,006**



For clamping cylindrical shafted tools.  
Usable for drilling, milling, reaming or grinding.

**Technical features:**

- type ER
- double slotted
- run-out accuracy 0,006 mm
- collets ER delivered without screw
- further design with runout accuracy 0,003 mm and seal disc available on request

Tool group C15  
Type 8157-E 6 Collets  
**ER11 0,5-7mm**  
according to DIN 6499-B,  
for high speed machining

Item no.	Size	Clamping dia.	Clamping range	D	L	E-Norm
893331	ER11	1	0,5-1mm	11,5	18mm	4008E
747667	ER11	1,5	0,5-1,5mm	11,5	18mm	4008E
747668	ER11	2	0,5-2mm	11,5	18mm	4008E
863498	ER11	2,5	0,5-2,5mm	11,5	18mm	4008E
756838	ER11	3	0,5-3mm	11,5	18mm	4008E
491486	ER11	3,5	0,5-3,5mm	11,5	18mm	4008E
893332	ER11	4	0,5-4mm	11,5	18mm	4008E
893333	ER11	5	0,5-5mm	11,5	18mm	4008E
893336	ER11	7	0,5-7mm	11,5	18mm	4008E

Tool group C15  
Type 8154-E 6 Collets  
**ER16 0,5-10mm**  
according to DIN 6499-B,  
for high speed machining

Item no.	Size	Clamping dia.	Clamping range	D	L	E-Norm
491386	ER16	1	0,5-1mm	17	27mm	426E
491387	ER16	1,5	0,5-1,5mm	17	27mm	426E
491388	ER16	2	0,5-2mm	17	27mm	426E
491389	ER16	2,5	0,5-2,5mm	17	27mm	426E
491390	ER16	3	0,5-3mm	17	27mm	426E
491391	ER16	4	0,5-4mm	17	27mm	426E
491392	ER16	5	0,5-5mm	17	27mm	426E
491393	ER16	6	0,5-6mm	17	27mm	426E
491398	ER16	7	0,5-7mm	17	27mm	426E
491399	ER16	8	0,5-8mm	17	27mm	426E
491400	ER16	9	0,5-9mm	17	27mm	426E
491401	ER16	10	0,5-10mm	17	27mm	426E

Tool group C15  
Type 8152-E 6 Collets  
**ER20 1-13mm**  
according to DIN 6499-B,  
for high speed machining

Item no.	Size	Clamping dia.	Clamping range	D	L	E-Norm
491394	ER20	1	1-1mm	21	31mm	428E
491395	ER20	1,5	1-1,5mm	21	31mm	428E
491396	ER20	2	1-2mm	21	31mm	428E
491397	ER20	2,5	1-2,5mm	21	31mm	428E
491402	ER20	3	1-3mm	21	31mm	428E
491403	ER20	4	1-4mm	21	31mm	428E
491405	ER20	5	1-5mm	21	31mm	428E
491406	ER20	6	1-6mm	21	31mm	428E
491407	ER20	7	1-7mm	21	31mm	428E
491408	ER20	8	1-8mm	21	31mm	428E
491409	ER20	9	1-9mm	21	31mm	428E
491410	ER20	10	1-10mm	21	31mm	428E
491411	ER20	11	1-11mm	21	31mm	428E
491412	ER20	12	1-12mm	21	31mm	428E

# SZ 0,006

Tool group C15  
Type 8151-E 6 Collets  
**ER25 1-16mm**  
according to DIN 6499-B,  
for high speed machining

Item no.	Size	Clamping dia.	Clamping range	D	L	E-Norm
491413	ER25	1	1-1mm	26	35mm	430E
491414	ER25	1,5	1-1,5mm	26	35mm	430E
491415	ER25	2	1-2mm	26	35mm	430E
491416	ER25	2,5	1-2,5mm	26	35mm	430E
491417	ER25	3	1-3mm	26	35mm	430E
491418	ER25	4	1-4mm	26	35mm	430E
491419	ER25	5	1-5mm	26	35mm	430E
491420	ER25	6	1-6mm	26	35mm	430E
491421	ER25	7	1-7mm	26	35mm	430E
491422	ER25	8	1-8mm	26	35mm	430E
491423	ER25	9	1-9mm	26	35mm	430E
491424	ER25	10	1-10mm	26	35mm	430E
491425	ER25	11	1-11mm	26	35mm	430E
491426	ER25	12	1-12mm	26	35mm	430E
491427	ER25	13	1-13mm	26	35mm	430E
491428	ER25	14	1-14mm	26	35mm	430E
491429	ER25	15	1-15mm	26	35mm	430E
491690	ER25	16	1-16mm	26	35mm	430E

Tool group C15  
Type 8153-E 6 Collets  
**ER32 2-20mm**  
according to DIN 6499-B,  
for high speed machining

Item no.	Size	Clamping dia.	Clamping range	D	L	E-Norm
491430	ER32	2	2-2mm	33	40mm	470E
491431	ER32	2,5	2-2,5mm	33	40mm	470E
491432	ER32	3	2-3mm	33	40mm	470E
491433	ER32	4	2-4mm	33	40mm	470E
491434	ER32	5	2-5mm	33	40mm	470E
491435	ER32	6	2-6mm	33	40mm	470E
491436	ER32	7	2-7mm	33	40mm	470E
491437	ER32	8	2-8mm	33	40mm	470E
491438	ER32	9	2-9mm	33	40mm	470E
491439	ER32	10	2-10mm	33	40mm	470E
491440	ER32	11	2-11mm	33	40mm	470E
491441	ER32	12	2-12mm	33	40mm	470E
491442	ER32	13	2-13mm	33	40mm	470E
491443	ER32	14	2-14mm	33	40mm	470E
491444	ER32	15	2-15mm	33	40mm	470E
491445	ER32	16	2-16mm	33	40mm	470E
491446	ER32	17	2-17mm	33	40mm	470E
491691	ER32	18	2-18mm	33	40mm	470E
491692	ER32	19	2-19mm	33	40mm	470E
491693	ER32	20	2-20mm	33	40mm	470E

Tool group C15  
Type 8170-E 6 Collets  
**ER40 3-26mm**  
according to DIN 6499-B,  
for high speed machining

Item no.	Size	Clamping dia.	Clamping range	D	L	E-Norm
491447	ER40	3	3-3mm	41	46mm	472E
491448	ER40	3,5	3-3,5mm	41	46mm	472E
491449	ER40	4	3-4mm	41	46mm	472E
491450	ER40	5	3-5mm	41	46mm	472E
491451	ER40	6	3-6mm	41	46mm	472E
491452	ER40	7	3-7mm	41	46mm	472E
491453	ER40	8	3-8mm	41	46mm	472E
491454	ER40	9	3-9mm	41	46mm	472E
491455	ER40	10	3-10mm	41	46mm	472E
491456	ER40	11	3-11mm	41	46mm	472E
491457	ER40	12	3-12mm	41	46mm	472E
491458	ER40	13	3-13mm	41	46mm	472E
491459	ER40	14	3-14mm	41	46mm	472E
491460	ER40	15	3-15mm	41	46mm	472E
491461	ER40	16	3-16mm	41	46mm	472E
491462	ER40	17	3-17mm	41	46mm	472E
491463	ER40	18	3-18mm	41	46mm	472E
491464	ER40	19	3-19mm	41	46mm	472E
491465	ER40	20	3-20mm	41	46mm	472E
491466	ER40	21	3-21mm	41	46mm	472E
491467	ER40	22	3-22mm	41	46mm	472E
491468	ER40	23	3-23mm	41	46mm	472E
491469	ER40	24	3-24mm	41	46mm	472E
491470	ER40	25	3-25mm	41	46mm	472E
491471	ER40	26	3-26mm	41	46mm	472E