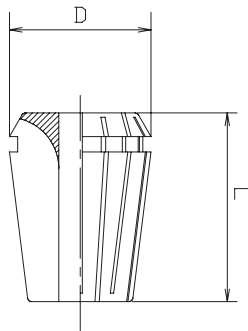


SZ 0,020



For clamping cylindrical shafted tools.
Usable for drilling, milling, reaming or grinding.

Technical features:

- type ER
- double slotted
- run-out accuracy 0,020 mm
- collets ER delivered without screw
- further design with runout accuracy 0,003 mm and seal disc available on request

Tool group C15
Type 8157-E 2 Collets
ER11 0,5-7mm
according to DIN 6499-B,
to **DIN class K2**

| Item no. | Size | Clamping dia. | Clamping range | D | L | E-Norm |
|----------|------|---------------|----------------|------|------|--------|
| 205762 | ER11 | 1 | 0,5-1mm | 11,5 | 18mm | 424E |
| 205763 | ER11 | 1,5 | 0,5-1,5mm | 11,5 | 18mm | 424E |
| 205764 | ER11 | 2 | 0,5-2mm | 11,5 | 18mm | 424E |
| 205765 | ER11 | 2,5 | 0,5-2,5mm | 11,5 | 18mm | 424E |
| 205766 | ER11 | 3 | 0,5-3mm | 11,5 | 18mm | 424E |
| 205767 | ER11 | 4 | 0,5-4mm | 11,5 | 18mm | 424E |
| 205768 | ER11 | 5 | 0,5-5mm | 11,5 | 18mm | 424E |
| 205769 | ER11 | 6 | 0,5-6mm | 11,5 | 18mm | 424E |
| 205770 | ER11 | 7 | 0,5-7mm | 11,5 | 18mm | 424E |

Tool group C15
Type 8154-E 2 Collets
ER16 0,5-10mm
according to DIN 6499-B,
to **DIN class K2**

| Item no. | Size | Clamping dia. | Clamping range | D | L | E-Norm |
|----------|------|---------------|----------------|----|------|--------|
| 651767 | ER16 | 1 | 0,5-1mm | 17 | 27mm | 426E |
| 651768 | ER16 | 1,5 | 0,5-1,5mm | 17 | 27mm | 426E |
| 651769 | ER16 | 2 | 0,5-2mm | 17 | 27mm | 426E |
| 651770 | ER16 | 2,5 | 0,5-2,5mm | 17 | 27mm | 426E |
| 651771 | ER16 | 3 | 0,5-3mm | 17 | 27mm | 426E |
| 651772 | ER16 | 4 | 0,5-4mm | 17 | 27mm | 426E |
| 651773 | ER16 | 5 | 0,5-5mm | 17 | 27mm | 426E |
| 651774 | ER16 | 6 | 0,5-6mm | 17 | 27mm | 426E |
| 651775 | ER16 | 7 | 0,5-7mm | 17 | 27mm | 426E |
| 651776 | ER16 | 8 | 0,5-8mm | 17 | 27mm | 426E |
| 651777 | ER16 | 9 | 0,5-9mm | 17 | 27mm | 426E |
| 651778 | ER16 | 10 | 0,5-10mm | 17 | 27mm | 426E |

Tool group C15
Type 8152-E 2 Collets
ER20 1-13mm
according to DIN 6499-B,
to **DIN class K2**

| Item no. | Size | Clamping dia. | Clamping range | D | L | E-Norm |
|----------|------|---------------|----------------|----|------|--------|
| 620584 | ER20 | 1 | 1-1mm | 21 | 31mm | 428E |
| 620585 | ER20 | 1,5 | 1-1,5mm | 21 | 31mm | 428E |
| 620586 | ER20 | 2 | 1-2mm | 21 | 31mm | 428E |
| 620587 | ER20 | 2,5 | 1-2,5mm | 21 | 31mm | 428E |
| 620588 | ER20 | 3 | 1-3mm | 21 | 31mm | 428E |
| 620589 | ER20 | 4 | 1-4mm | 21 | 31mm | 428E |
| 620590 | ER20 | 5 | 1-5mm | 21 | 31mm | 428E |
| 619916 | ER20 | 6 | 1-6mm | 21 | 31mm | 428E |
| 620591 | ER20 | 7 | 1-7mm | 21 | 31mm | 428E |
| 620592 | ER20 | 8 | 1-8mm | 21 | 31mm | 428E |
| 620593 | ER20 | 9 | 1-9mm | 21 | 31mm | 428E |
| 620594 | ER20 | 10 | 1-10mm | 21 | 31mm | 428E |
| 620595 | ER20 | 11 | 1-11mm | 21 | 31mm | 428E |
| 620596 | ER20 | 12 | 1-12mm | 21 | 31mm | 428E |
| 620597 | ER20 | 13 | 1-13mm | 21 | 31mm | 428E |

SZ 0,020

Tool group C15
Type 8151-E 2 Collets
ER25 1-16mm
according to DIN 6499-B,
to **DIN class K2**

| Item no. | Size | Clamping dia. | Clamping range | D | L | E-Norm |
|----------|------|---------------|----------------|----|------|--------|
| 316962 | ER25 | 1 | 1-1mm | 26 | 35mm | 430E |
| 316963 | ER25 | 1,5 | 1-1,5mm | 26 | 35mm | 430E |
| 316964 | ER25 | 2 | 1-2mm | 26 | 35mm | 430E |
| 205784 | ER25 | 2,5 | 1-2,5mm | 26 | 35mm | 430E |
| 205785 | ER25 | 3 | 1-3mm | 26 | 35mm | 430E |
| 205786 | ER25 | 4 | 1-4mm | 26 | 35mm | 430E |
| 205787 | ER25 | 5 | 1-5mm | 26 | 35mm | 430E |
| 205788 | ER25 | 6 | 1-6mm | 26 | 35mm | 430E |
| 302373 | ER25 | 7 | 1-7mm | 26 | 35mm | 430E |
| 205743 | ER25 | 8 | 1-8mm | 26 | 35mm | 430E |
| 205744 | ER25 | 9 | 1-9mm | 26 | 35mm | 430E |
| 205745 | ER25 | 10 | 1-10mm | 26 | 35mm | 430E |
| 205742 | ER25 | 11 | 1-11mm | 26 | 35mm | 430E |
| 205746 | ER25 | 12 | 1-12mm | 26 | 35mm | 430E |
| 205747 | ER25 | 13 | 1-13mm | 26 | 35mm | 430E |
| 205748 | ER25 | 16 | 1-16mm | 26 | 35mm | 430E |
| 205749 | ER25 | 15 | 1-15mm | 26 | 35mm | 430E |
| 205750 | ER25 | 16 | 1-16mm | 26 | 35mm | 430E |

Tool group C15
Type 8153-E 2 Collets
ER32 2-20mm
according to DIN 6499-B,
to **DIN class K2**

| Item no. | Size | Clamping dia. | Clamping range | D | L | E-Norm |
|----------|------|---------------|----------------|----|------|--------|
| 620620 | ER32 | 2,5 | 2-2,5mm | 33 | 40mm | 470E |
| 620621 | ER32 | 3 | 2-3mm | 33 | 40mm | 470E |
| 620622 | ER32 | 4 | 2-4mm | 33 | 40mm | 470E |
| 620623 | ER32 | 5 | 2-5mm | 33 | 40mm | 470E |
| 620615 | ER32 | 6 | 2-6mm | 33 | 40mm | 470E |
| 620616 | ER32 | 7 | 2-7mm | 33 | 40mm | 470E |
| 620617 | ER32 | 8 | 2-8mm | 33 | 40mm | 470E |
| 620618 | ER32 | 9 | 2-9mm | 33 | 40mm | 470E |
| 620619 | ER32 | 10 | 2-10mm | 33 | 40mm | 470E |
| 620624 | ER32 | 11 | 2-11mm | 33 | 40mm | 470E |
| 620625 | ER32 | 12 | 2-12mm | 33 | 40mm | 470E |
| 620626 | ER32 | 13 | 2-13mm | 33 | 40mm | 470E |
| 620627 | ER32 | 14 | 2-14mm | 33 | 40mm | 470E |
| 620628 | ER32 | 15 | 2-15mm | 33 | 40mm | 470E |
| 620629 | ER32 | 16 | 2-16mm | 33 | 40mm | 470E |
| 620630 | ER32 | 17 | 2-17mm | 33 | 40mm | 470E |
| 620631 | ER32 | 18 | 2-18mm | 33 | 40mm | 470E |
| 620632 | ER32 | 19 | 2-19mm | 33 | 40mm | 470E |
| 620633 | ER32 | 20 | 2-20mm | 33 | 40mm | 470E |

Tool group C15
Type 8170-E 2 Collets
ER40 3-26mm
according to DIN 6499-B,
to **DIN class K2**

| Item no. | Size | Clamping dia. | Clamping range | D | L | E-Norm |
|----------|------|---------------|----------------|----|------|--------|
| 681016 | ER40 | 4 | 3-4mm | 41 | 46mm | 472E |
| 681017 | ER40 | 5 | 3-5mm | 41 | 46mm | 472E |
| 394443 | ER40 | 6 | 3-6mm | 41 | 46mm | 472E |
| 681018 | ER40 | 7 | 3-7mm | 41 | 46mm | 472E |
| 394448 | ER40 | 8 | 3-8mm | 41 | 46mm | 472E |
| 681019 | ER40 | 9 | 3-9mm | 41 | 46mm | 472E |
| 681020 | ER40 | 10 | 3-10mm | 41 | 46mm | 472E |
| 681021 | ER40 | 11 | 3-11mm | 41 | 46mm | 472E |
| 394444 | ER40 | 12 | 3-12mm | 41 | 46mm | 472E |
| 681022 | ER40 | 13 | 3-13mm | 41 | 46mm | 472E |
| 681023 | ER40 | 14 | 3-14mm | 41 | 46mm | 472E |
| 394445 | ER40 | 15 | 3-15mm | 41 | 46mm | 472E |
| 681024 | ER40 | 16 | 3-16mm | 41 | 46mm | 472E |
| 681025 | ER40 | 17 | 3-17mm | 41 | 46mm | 472E |
| 602145 | ER40 | 18 | 3-18mm | 41 | 46mm | 472E |
| 681026 | ER40 | 19 | 3-19mm | 41 | 46mm | 472E |
| 602024 | ER40 | 20 | 3-20mm | 41 | 46mm | 472E |
| 681027 | ER40 | 21 | 3-21mm | 41 | 46mm | 472E |
| 602025 | ER40 | 22 | 3-22mm | 41 | 46mm | 472E |
| 681028 | ER40 | 23 | 3-23mm | 41 | 46mm | 472E |
| 681029 | ER40 | 24 | 3-24mm | 41 | 46mm | 472E |
| 602026 | ER40 | 25 | 3-25mm | 41 | 46mm | 472E |
| 681030 | ER40 | 26 | 3-26mm | 41 | 46mm | 472E |