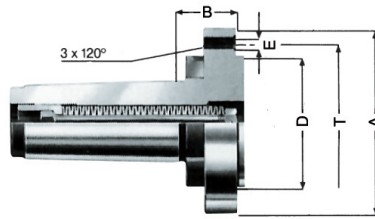


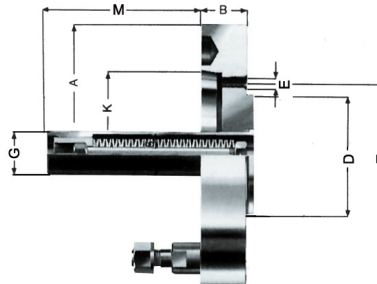
CoB



Tool group A14  
Type 688 **Basic body** with  
**morse taper** and **draw-off nut**  
**mechanical / hydraulic**

Item no.	MT	A	B	D	E	T	Weight approx. g
088295	5	140	45	100	M 10	120	5800
088296	6	140	45	100	M 10	120	7480

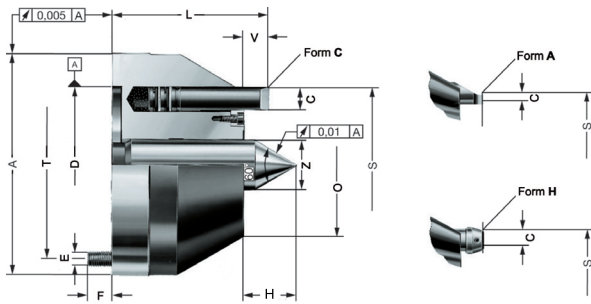
Adapter plate CoB



Tool group A14  
Type 688 Adapter plate  
**short taper with spring set**

Item no.	Taper	Design	A	B	D	E	G	K	M	T	Weight approx. g
088331	5	DIN 55026	140	30	100	M 10	37,5	82,563	144	120	4500
088332	6	DIN 55026	165	35	100	M 10	37,5	106,39	139	120	7000
088333	8	DIN 55026	216	40	100	M 10	37,5	139,735	134	120	11500
088334	11	DIN 55026	280	45	100	M 10	37,5	196,885	129	120	23000
088335	5	DIN 55027	140	30	100	M 10	37,5	82,563	144	120	5500
088336	6	DIN 55027	165	35	100	M 10	37,5	106,39	139	120	7000
088337	8	DIN 55027	216	40	100	M 10	37,5	139,735	134	120	11500
088338	11	DIN 55027	280	45	100	M 10	37,5	196,885	129	120	23000
088339	5	DIN 55029	140	30	100	M 10	37,5	82,563	144	120	4500
088340	6	DIN 55029	165	35	100	M 10	37,5	106,39	139	120	7000
088341	8	DIN 55029	216	40	100	M 10	37,5	139,735	134	120	11500
088342	11	DIN 55029	280	45	100	M 10	37,5	196,885	129	120	23000

# Driving heads CoB



For clamping large and heavy workpieces, even with extremely uneven faces.

With hydraulic compensation - interchangeable driving pins  
 Workpiece weight with single layer disk spring package: 500 kg  
 Workpiece weight with double layer disk spring package: 1000 kg

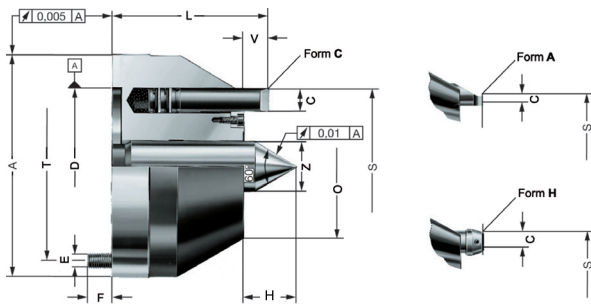
**Technical features:**

- bolt-on face driver heads with interchangeable driving pins
- driving pins can be changed to allow right-hand or left-hand rotation
- spring loaded, rigid centre, axially adjustable

Tool group A14  
 Type 688-10 Face Driving head  
**size 1 CoB; hydraulic**  
**right-hand rotation**

Item no.	S	Approx. turning range	A	C	D	E	F	H	L	O	T	V	Z	Pin	Weight approx. g
088301	63	65-125	142	6	100	M 10	15	max. 45 min. 18	102	72	120	16	25	6 x 16 A	7000
088361	75	80-150	142	9,5	100	M 10	15	max. 45 min. 18	102	72	120	16	25	6 x 16 H	7000
088302	80	82-160	142	14,5	100	M 10	15	max. 45 min. 18	102	72	120	16	25	6 x 16 C	7000

Constant face drivers CoB



For clamping large and heavy workpieces, even with extremely uneven faces.

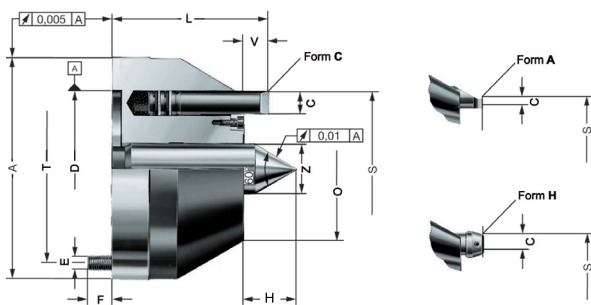
With hydraulic compensation - interchangeable driving pins  
 Workpiece weight with single layer disk spring package: 500 kg  
 Workpiece weight with double layer disk spring package: 1000 kg

**Technical features:**

- bolt-on face driver heads with interchangeable driving pins
- driving pins can be changed to allow right-hand or left-hand rotation
- spring loaded, rigid centre, axially adjustable

Tool group A14  
 Type 688-10 Face Driving head  
**size 2 CoB; hydraulic**  
**right-hand rotation**

Item no.	S	Approx. turning range	A	C	D	E	F	H	L	O	T	V	Z	Pin	Weight approx. g
088303	83	85-165	142	6	100	M 10	15	max. 45 min. 18	102	92	120	16	32	6 x 16 A	8200
088362	95	100-190	142	9,5	100	M 10	15	max. 45 min. 18	102	92	120	16	32	6 x 16 H	8200
088304	100	102-200	142	14,5	100	M 10	15	max. 45 min. 18	102	92	120	16	32	6 x 16 C	8200



For clamping large and heavy workpieces, even with extremely uneven faces.

With hydraulic compensation - interchangeable driving pins  
 Workpiece weight with single layer disk spring package: 500 kg  
 Workpiece weight with double layer disk spring package: 1000 kg

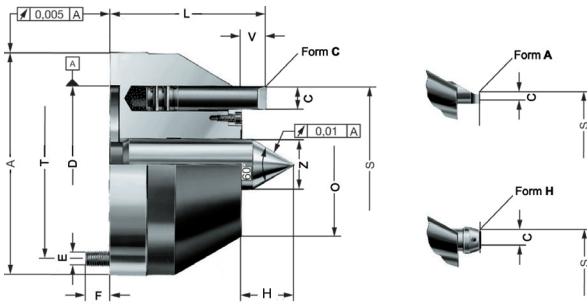
**Technical features:**

- bolt-on face driver heads with interchangeable driving pins
- driving pins can be changed to allow right-hand or left-hand rotation
- spring loaded, rigid centre, axially adjustable

Tool group A14  
 Type 688-10 Face Driving head  
**size 3 CoB; hydraulic**  
**right-hand rotation**

Item no.	S	Approx. turning range	A	C	D	E	F	H	L	O	T	V	Z	Pin	Weight approx. g
088305	108	110-215	142	6	100	M 10	15	max. 45 min. 18	102	117	120	16	32	6 x 16 A	9500
088363	120	125-240	142	9,5	100	M 10	15	max. 45 min. 18	102	117	120	16	32	6 x 16 H	9500
088306	125	127-250	142	14,5	100	M 10	15	max. 45 min. 18	102	117	120	16	32	6 x 16 C	9500

# Driving heads CoB



For clamping large and heavy workpieces, even with extremely uneven faces.

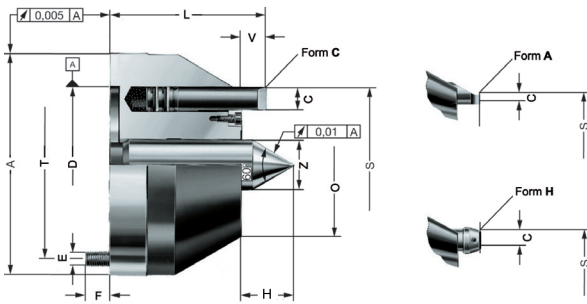
With hydraulic compensation - interchangeable driving pins  
 Workpiece weight with single layer disk spring package: 500 kg  
 Workpiece weight with double layer disk spring package: 1000 kg

**Technical features:**

- bolt-on face driver heads with interchangeable driving pins
- driving pins can be changed to allow right-hand or left-hand rotation
- spring loaded, rigid centre, axially adjustable

Tool group A14  
 Type 688-10 Face Driving head  
**size 4 CoB; hydraulic right-hand rotation**

Item no.	S	Approx. turning range	A	C	D	E	F	H	L	O	T	V	Z	Pin	Weight approx. g
088307	143	145-285	182	6	100	M 10	15	max. 45 min. 18	102	152	120	16	32	6 x 16 A	16
088364	155	160-310	182	9,5	100	M 10	15	max. 45 min. 18	102	152	120	16	32	6 x 16 H	16
088308	160	162-320	182	14,5	100	M 10	15	max. 45 min. 18	102	152	120	16	32	6 x 16 C	16



For clamping large and heavy workpieces, even with extremely uneven faces.

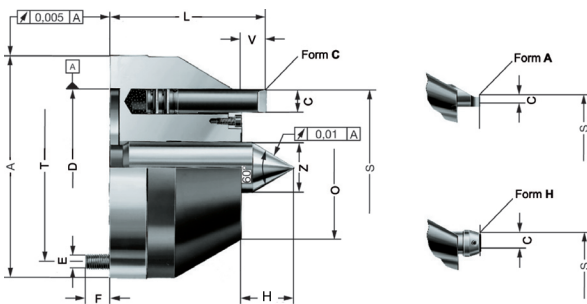
With hydraulic compensation - interchangeable driving pins  
 Workpiece weight with single layer disk spring package: 500 kg  
 Workpiece weight with double layer disk spring package: 1000 kg

**Technical features:**

- bolt-on face driver heads with interchangeable driving pins
- driving pins can be changed to allow right-hand or left-hand rotation
- spring loaded, rigid centre, axially adjustable

Tool group A14  
 Type 688-20 Face Driving head  
**size 1 CoB; hydraulic left-hand rotation**

Item no.	S	Approx. turning range	A	C	D	E	F	H	L	O	T	V	Z	Pin	Weight approx. g
088321	63	65-125	142	6	100	M 10	15	max. 45 min. 18	102	72	120	16	25	6 x 16 A	7000
088381	75	80-150	142	9,5	100	M 10	15	max. 45 min. 18	102	72	120	16	25	6 x 16 H	7000
088322	80	82-160	142	14,5	100	M 10	15	max. 45 min. 18	102	72	120	16	25	6 x 16 C	7000



For clamping large and heavy workpieces, even with extremely uneven faces.

With hydraulic compensation - interchangeable driving pins  
 Workpiece weight with single layer disk spring package: 500 kg  
 Workpiece weight with double layer disk spring package: 1000 kg

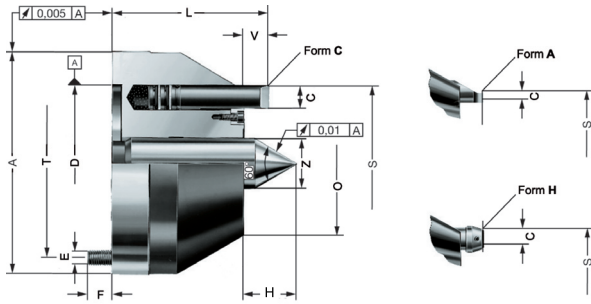
**Technical features:**

- bolt-on face driver heads with interchangeable driving pins
- driving pins can be changed to allow right-hand or left-hand rotation
- spring loaded, rigid centre, axially adjustable

Tool group A14  
 Type 688-20 Face Driving head  
**size 2 CoB; hydraulic left-hand rotation**

Item no.	S	Approx. turning range	A	C	D	E	F	H	L	O	T	V	Z	Pin	Weight approx. g
088323	83	85-165	142	6	100	M 10	15	max. 45 min. 18	102	92	120	16	32	6 x 16 A	8200
088382	95	100-190	142	9,5	100	M 10	15	max. 45 min. 18	102	92	120	16	32	6 x 16 H	8200
088324	100	102-200	142	14,5	100	M 10	15	max. 45 min. 18	102	92	120	16	32	6 x 16 C	8200

# Driving heads CoB



For clamping large and heavy workpieces, even with extremely uneven faces.

With hydraulic compensation - interchangeable driving pins  
 Workpiece weight with single layer disk spring package: 500 kg  
 Workpiece weight with double layer disk spring package: 1000 kg

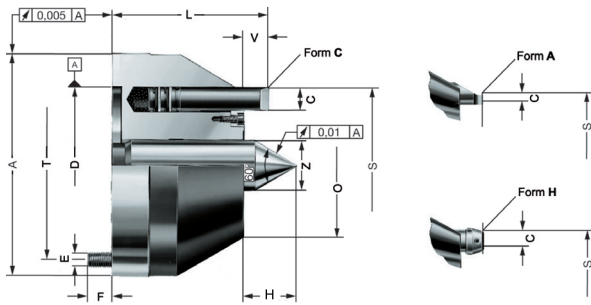
**Technical features:**

- bolt-on face driver heads with interchangeable driving pins
- driving pins can be changed to allow right-hand or left-hand rotation
- spring loaded, rigid centre, axially adjustable

Tool group A14  
 Type 688-20 Face Driving head  
**size 3 CoB; hydraulic**  
**left-hand rotation**

Item no.	S	Approx. turning range	A	C	D	E	F	H	L	O	T	V	Z	Pin	Weight approx. g
088325	108	110-215	142	6	100	M 10	15	max. 45 min. 18	102	117	120	16	32	6 x 16 A	9500
088383	120	125-240	142	9,5	100	M 10	15	max. 45 min. 18	102	117	120	16	32	6 x 16 H	9500
088326	125	127-250	142	14,5	100	M 10	15	max. 45 min. 18	102	117	120	16	32	6 x 16 C	9500

Constant face drivers CoB



For clamping large and heavy workpieces, even with extremely uneven faces.

With hydraulic compensation - interchangeable driving pins  
 Workpiece weight with single layer disk spring package: 500 kg  
 Workpiece weight with double layer disk spring package: 1000 kg

**Technical features:**

- bolt-on face driver heads with interchangeable driving pins
- driving pins can be changed to allow right-hand or left-hand rotation
- spring loaded, rigid centre, axially adjustable

Tool group A14  
 Type 688-20 Face Driving head  
**size 4 CoB; hydraulic**  
**left-hand rotation**

Item no.	S	Approx. turning range	A	C	D	E	F	H	L	O	T	V	Z	Pin	Weight approx. g
088327	143	145-285	182	6	100	M 10	15	max. 45 min. 18	102	152	120	16	32	6 x 16 A	16
088384	155	160-310	182	9,5	100	M 10	15	max. 45 min. 18	102	152	120	16	32	6 x 16 H	16
088328	160	162-320	182	14,5	100	M 10	15	max. 45 min. 18	102	152	120	16	32	6 x 16 C	16