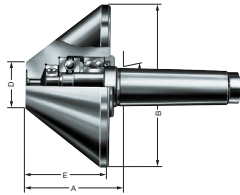


MZK

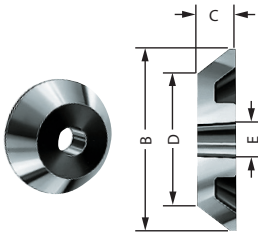
Tool group A06
Type 618 Revolving tailstock center, **cone truncated, 75°**



Item no.	Size	Mount MT	A	B	D	E	Workpiece weight max. kg	Concentricity deviation	Weight
301559	172	2	80	80	20	67	300	0,008	2000
301560	172a	3	80	80	20	67	400	0,008	2000
062211	173	3	85,5	120	30	72	600	0,008	4200
301561	172b	4	81,5	80	20	67	400	0,008	2400
062224	173a	4	87	120	30	72	800	0,008	4300
062299	174	4	107	170	50	90	1200	0,01	9700
062232	173b	5	88	120	30	72	800	0,008	5100
063614	174a	5	106	170	50	90	1600	0,01	10600
063662	175	5		250	75	130	2000	0,01	34000
063633	174b	6	107,5	170	50	90	1600	0,01	13300
063656	175a	6	148	250	75	130	2000	0,01	37000
063680	176	6	184	350	120	168	4000	0,015	82000

Accessories MZK

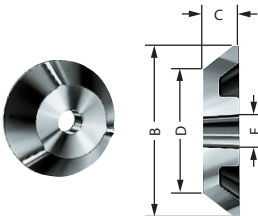
Tool group A06
Type 608-20 Suitable **inserts**
for centering tapers **AZ**
Standard version, taper 75°



Item no.	Size	for MT	B	C	D	E	Weight
304565 ¹⁾	1	4	60	68	5	32	900
304566	2	4	100	45	45	32	1500
304567	3	4	150	45	95	32	4100
304568	4	4	200	45	145	32	6000
304569	5	4	250	45	195	32	8500
304570	1	5	100	43	45	40	1500
304571	2	5	150	43	95	40	4400
304572	3	5	200	43	145	40	6100
304573	4	5	250	43	195	40	8100
304574	5	5	300	43	245	40	11600
304575	1	6	150	54	95	50	3000
304576	2	6	200	54	145	50	8100
304577	3	6	250	54	195	50	11100
304578	4	6	300	54	245	50	14000
304579	5	6	350	54	295	50	18800

¹⁾ Without fixing by screw and washer

Tool group A06
Type 608-40 Suitable **inserts**
for centering tapers **AZR**
with three support surfaces,
for rough pieces 75°



Item no.	Size	for MT	B	C	D	E	Weight
304736	2	4	100	45	45	32	1500
304737	3	4	150	45	95	32	4100
304738	4	4	200	45	145	32	6000
304739	5	4	250	45	195	32	8500
304740	1	5	100	43	45	40	1500
304741	2	5	150	43	95	40	4400
304742	3	5	200	43	145	40	6100
304743	4	5	250	43	195	40	8100
304744	5	5	300	43	245	40	11600
304745	1	6	150	54	95	50	3000
304746	2	6	200	54	145	50	8100
304747	3	6	250	54	195	50	11100
304748	4	6	300	54	245	50	14000
304749	5	6	350	54	295	50	18800