

Reliable clamping and mounting of workpieces on drilling and measuring machines.

Standard version

Clamping system mechanical, manually operated

Technical features:

- body made out of special cast metal
- mounting possibilities on the side and frontal
- long guidance for movable jaw also in outer clamping range
- both jaws with contact surface for clamping flat workpieces
- clamping jaws reversible: one size smooth, respectively with longitudinal and transversal prisms, one side grooved, both sides ground

Customer advantage:

- low, stable design with thread spindle
- entire clamping range within reach by turning

Tool group A12
Type 728-00 **BOF**
With V-jaw and normal jaw SBO

Item no.	Size	Jaw width	Clamping capacity	Jaw height	Length	Height	Length body	Weight kg
142835	1	90	90	25	356	60	195	5,5
111595	2	110	130	32	470	72,5	315	9,5
111596	3	135	160	40	550	80,5	365	13,5
111597	4	160	220	50	692	95,5	445	25



Reliable clamping and mounting of workpieces on drilling and measuring machines.
For rapid clamping and unclamping, especially for series machining of workpieces.

Quick action vice

Clamping system mechanical, manually operated

Technical features:

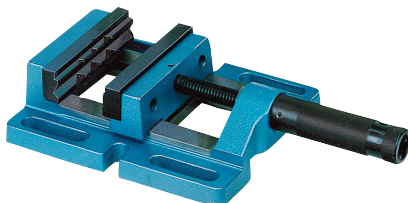
- body made out of special cast metal
- mounting possibilities on the side and frontal
- long guidance for movable jaw also in outer clamping range
- both jaws with contact surface for clamping flat workpieces
- clamping jaws reversible: one size smooth, respectively with longitudinal and transversal prisms, one side grooved, both sides ground

Customer advantage:

- one-hand operation
- positive locking

Tool group A12
Type 728-20 **BSS**
With V-jaw and normal jaw SBO

Item no.	Size	Jaw width	Clamping capacity	Jaw height	Length	Height	Length body	Weight kg
134158	2	110	130	32	510	72,5	315	9,5
134159	3	135	160	40	587	80,5	365	13,5



Reliable clamping and mounting of workpieces on drilling and measuring machines.

Standard version, single

Clamping system mechanical, manually operated

Technical features:

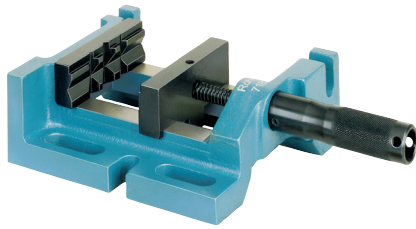
- body made out of cast metal
- movable jaw, mounted on side
- stationary jaw with three vertical and one horizontal prism
- both jaws with contact surface for clamping flat workpieces
- jaws and spindle gunmetal-finished

Customer advantage:

- The thread spindle is covered by a protecting sleeve.
- entire clamping range within reach by turning
- constant unit length, spindle moves protected inside the handle
- solid and handy version

Tool group A12
Type 729-60 **DPV**
With V-jaw and normal jaw SBO

Item no.	Size	Jaw width	Clamping capacity	Jaw height	Length	Height	Length body	Width	Weight kg
863421	1	80	70	30	234	58	154	142	3,6
863422	2	100	92	30	272	63,5	175	152	4,3
863423	3	120	110	30	345	63,5	225	180	6,3
1132597	4	150	125	30	378	65	238	198	8,1



Reliable clamping and mounting of workpieces on drilling and measuring machines.
3 mounting options via two additional contact surfaces machined at right angles: base, right-hand and end-side.

Standard version, single
Clamping system mechanical, manually operated.

Technical features:

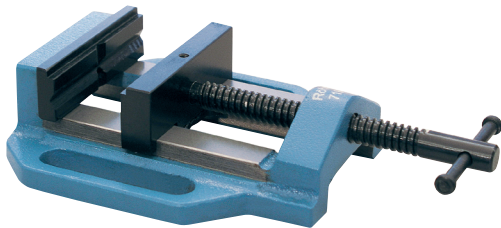
- body made out of cast metal
- movable jaw, mounted on side
- stationary jaw with three vertical and one horizontal prism
- both jaws with contact surface for clamping flat workpieces
- jaws and spindle gunmetal-finished

Customer advantage:

- The thread spindle is covered by a protecting sleeve
- entire clamping range within reach by turning
- constant unit length, spindle moves protected inside the handle
- solid and handy version

Tool group A12
Type 729-20 **DPV 3-W**
With V-jaw and normal jaw SBO

Item no.	Size	Jaw width	Clamping capacity	Jaw height	Length	Height	Length body	Width	Weight kg
007182	2	100	93	30	279	65	189	159	5,1



D. I. Y. design for small drill stands.
Reliable clamping and mounting of workpieces on drilling and measuring machines.

Clamping system mechanical, manually operated.

Technical features:

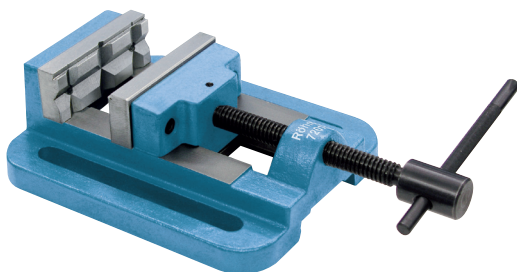
- long mounting slots
- jaws and spindle gunmetal-finished
- fixed jaw with vertical and horizontal V-jaw
- basic body from cast

Customer advantage:

- lever moveable
- both jaws have a seat for retaining flat workpieces

Tool group A12
Type 729-60 **BSH**
Small, light D. I. Y. design
With V-jaw and normal jaw SBO,
black-finished

Item no.	Size	Jaw width	Clamping capacity	Length body	Width body	Height	Jaw height	Weight kg
007193	1	63	65	125	105	43	25	1,2
007194	2	80	85	150	130	46	25	1,7
007196	3	100	80	170	175	57	25	4,2



Sturdy craftsman design for drill stands, bench drills and drill presses.
Also suitable for milling machines and shapers.

Clamping system mechanical, manually operated.

Technical features:

- long mounting slots
- jaws and spindle gunmetal-finished
- fixed jaw with vertical and horizontal V-jaw
- the moveable steel jaw is supported by a cast jaw with internal guidance
- blue hammer (burned in)

Customer advantage:

- both jaws have a seat for retaining flat workpieces
- long lever for maximal clamping force
- basic body from malleable cast iron

Tool group A12
Type 729-60 **BSH**
Sturdy craftsman design
With V-jaw and normal jaw SBO,
black-finished

Item no.	Size	Jaw width	Clamping capacity	Length body	Width body	Height	Jaw height	Weight kg
007197	4	80	80	200	140	70	40	5
007201	5	100	95	215	175	75	40	7
007202	6	120	110	260	215	85	40	11
007207	7	140	150	300	220	85	40	12,5