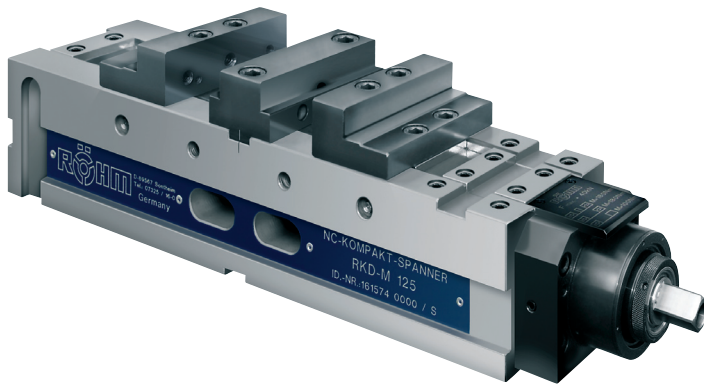


RKD-M


For flexible clamping on machining centres and other production systems.
Three clamping functions: Twin clamping - centric clamping - single clamping

Clamping system mechanical without power transmitter, manually operated.

With drive spindle on one side.

Horizontal, vertical or side mounting.

Technical features:

- Machine vices with two mobile jaws and one immobile centre jaw
- the solid steel body and all guide surfaces are hardened and ground on all sides
- fastening of the vice with clamping claws only (direct mounting on request)
- constant clamping force during every clamping operation and high repeating accuracy if torque wrenches are used
- large clamp stroke, 50 mm per jaw

Customer advantage:

- the clamping thread of the spindle is protected in all positions to prevent the penetration of dirt and chips
- due to on both sides fixed grease nipples the lubrication of the spindle thread and all guides is ensured
- the compact vice is on delivery equipped for twin and centric clamping
- operation by means of provided hand crank

Tool group A32
Type 749-00 **RKD-M**
With reversible stepped jaws
and centre jaw

Item no.	162653	162654
Jaw width A	92	125
B1 slot 1	0-48	0-48
B1 slot 2	48-96	46-94
B1 slot 3	-	92-140
B2 slot 1	42-79	51-88
B2 slot 2	79-127	86-134
B2 slot 3	-	132-180
C	32	40
D	480	617
F	366	495
G _{-0,02}	85	105
H _{-0,02}	30	40
J	56	70
K	94	126
L	10	10
M	25	30
N _{-0,01}	16	20
O	36	36
P	114	122
R	143	201
S	31	32
T _{-0,02}	30	37,5
W	1 x 48	2 x 46
Key-width	17	19
a	63	80
b	13,6	15,6
c1	M6 x 14	M8 x 14
c2	M5 x 9	M5 x 10
c3	M10 x 16	M10 x 18
d	48	60
e	8	12
f	14	18
g	70	95
h	20	25
i	50	45
l _{-0,02}	177	237
Clamping force kN	25	40
Weight kg	24	52

