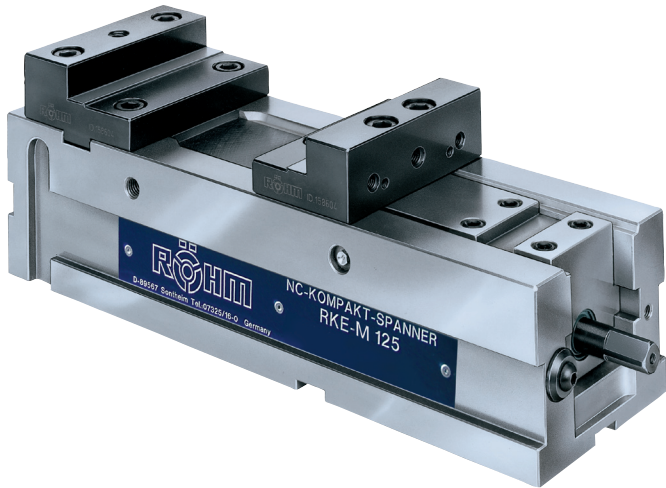


RKE-M


Constant clamping force in every clamping procedure with the use of a torque wrench.

Horizontal, vertical or side mounting.

Clamping system mechanical without power transmitter, manually operated.

Technical features:

- solid steel body
- all guide surfaces are hardened and ground
- long clamping slide with clutch, hardened on all sides, function surfaces ground
- clamping surfaces for clamping claws
- mounting thread M12 for workpiece stop

Customer advantage:

- solid chip guard prevents chips from penetrating the inside of the body
- actuation possible from both spindle ends
- on demand convertible into the RKE-Type with power transmission (toggle lever)

Tool group A32
Type 743-00 **RKE-M**
with stepped jaws or standard
clamping jaws

Item no.	162644	162642
Jaw width A	125	125
Jaw design	stepped jaws	standard clamping jaws
B1	-	0 - 216
B2	0 - 215	-
B3	97 - 312	-
C	40	40
D	428	428
F	400	400
G _{-0,02}	100	100
H1 _{-0,05}	-	110,5
H2 _{-0,05}	112,5	-
H3 _{-0,05}	56,5	-
J1	-	78
J2	70	-
K	126	126
L1	-	92
L2	94	-
M	40	-
M*	30	-
N _{-0,01}	20	-
T _{-0,02}	37,5	37,5
Shifting range W	1 x 108	1 x 108
Clamping travel Z	109	109
a	80	80
b	15,6	15,6
c1	M8	M8
c2	M5	M5
c3	M10	M10
d	60	60
e	12	12
f	18	18
g	95	95
h	25	25
i	45	45
l _{-0,02}	240	240
Clamping force kN	40	40
Weight kg	39	39

