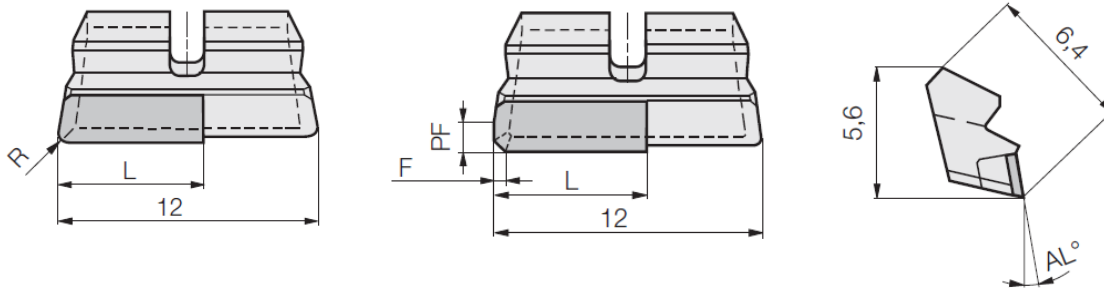


H Insert W 612.-..... R PCD / CBN

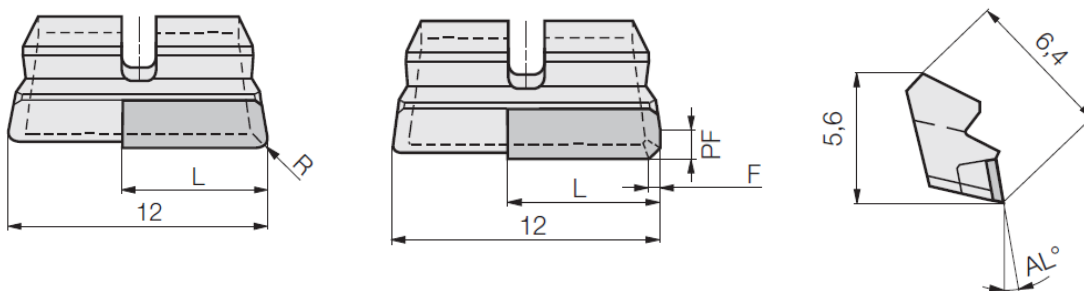


with radius (R) or with chamfer (F) and wiper geometry (PF)

PCD / CBN							Part nr. 20313	Part nr. 20314	Part nr. 20317	Part nr. 20318
Code	Drawing nr.	L	R	AL°	F	PF	PCD 10	PCD 30	CBN 40	CBN 80
61,270	W6127-0318 0045R	7		0	0.3x45°	1	●	●		
61,271	W6127-0318 1045R	7		10	0.3x45°	1	●	○		
61,272	W6127-0318 6445R	7		6	0.3x45°	1	●	○		
61,273	W6127-0418 0000R	7	0.4	0			●	○		
61,274	W6127-0318 0000R	7	0.3	0			●	●		
61,275	W6127-0218 0000R	7	0.2	0			●	○		
61,276	W6127-0301 0045R	7	0.1	0	0.3x45°		●	○		
61,278	W6127-0818 0011R	7	0.8	0		1.6			○	●
61,279	W6127-0305 6445R	7		6	0.3x45°		●			
61,250	W6125-0118 6645R	5		6	0.1x45°	1	●			

● ex stock ○ in short time available

H Insert W 612.-..... L PCD / CBN



with radius (R) or with chamfer (F) and wiper geometry (PF)

PCD / CBN							Part nr. 20319	Part nr. 20320	Part nr. 20323	Part nr. 20324
Code	Drawing nr.	L	R	AL°	F	PF	PCD 10	PCD 30	CBN 40	CBN 80
61,270	W6127-0318 0045L	7		0	0.3x45°	1	●	●	○	○
61,271	W6127-0418 0000L	7	0.4	0			●	○		
61,250	W6125-0118 6645L	5		6	0.1x45°	1	●			

● ex stock ○ in short time available

We reserve the right to make technical changes.