



Presetter and Measuring Machine
for Crankshaft Cutters
»gemini«

ZOLLER »gemini« provides you with an ergonomic work place for extremely easy presetting, automatic measurement and inspection of crankshaft cutters and turn broaching tools. Fast, easy-to-operate and with microprecision: ZOLLER »gemini« measures 120 cutting edges in only 80 seconds – with unrivalled simplicity. It is ergonomically designed, which allows operators to easily preset as well as automatically measure and check tools. As a result, you benefit from the highest quality of your workpieces increased productivity and complete documentation



- ✓ CNC control unit and autofocus
- ✓ Presetting and measuring of crankshaft cutters and turn-broach tools
- ✓ High-precision spindle »ace«
- ✓ Universal spindle with VSH change and power clamping
- ✓ Concentricity and axial run-out diagram with automatic cutting edge correction function and tolerance range
- ✓ Fast measurement with ZOLLER »focus 360i«, measures 120 cutting edges in only 80 seconds
- ✓ Automatic cutting edge cleaning*
- ✓ Space-saving protective housing*
- ✓ Calibrator for balancing machine spindles, which is certified by an independent institute*
- ✓ ZOLLER image processing software »pilot 3.0«
*optional

- ✓ Automatic concentricity and axial run-out compensation with regard to the machine spindle
- ✓ Integrated measuring sensor for axial run-out compensation of basic tool body for optimal manufacturing results*
- ✓ Heidenhain glass scales for high measuring accuracy
- ✓ CCD camera with telecentric lens
- ✓ Dynamic cross hairs over entire measuring window
- ✓ Analog focusing display for focusing the tool cutting edge
- ✓ Automatic cutting edge recognition, also greater than 90°
- ✓ Membrane keyboard for power-operated spindle brake and spindle lock
- ✓ Autofocus and rotary encoder
- ✓ Control unit »cockpit« / Adapter and tool management
- ✓ Numerous measuring programs, for example, concentricity and run-out
- ✓ Machine table

We reserve the right to make technical changes.



Presetter and Measuring Machine
for Crankshaft Cutters
»gemini«

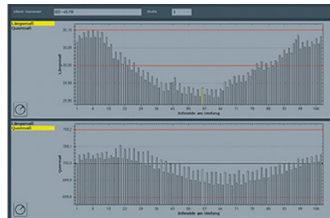
Technical Data	Measuring range Z	Measuring range X	Diameter
»gemini«	150 mm / 5.9"	500 mm / 19.7"	1000 mm / 39.4"

Note: The quoted measuring range may be reduced under circumstances when using adapters and tool posts.



»pilot 3.0« 24"

State-of-the-art image processing technology



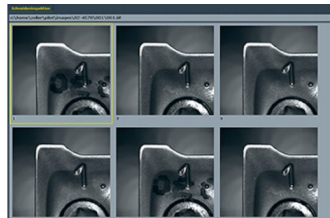
Measuring mode »focus 360i«



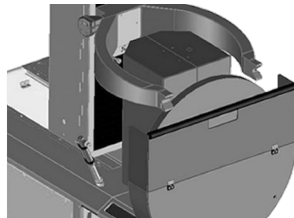
Cutting edge inspection



Control unit »cockpit«



Automatic cutting edge inspection »a.e.c.«



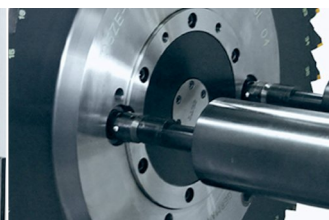
Work area protection cover



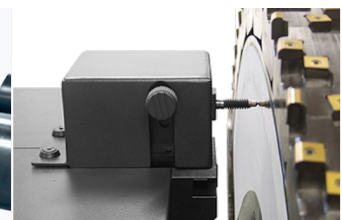
Automatic cutting edge cleaning



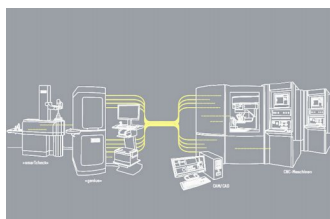
Loading carriage and load centering



Power-operated tool clamping auto tolerance compensation



Automatic axial run-out compensation



Data transmission



Color laser printer



Label printer

We reserve the right to make technical changes.



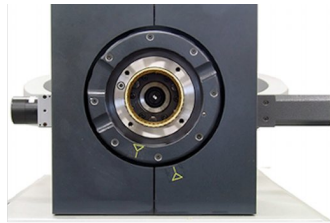
Presetter and Measuring Machine
for Crankshaft Cutters
»gemini«



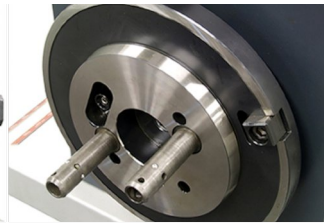
Foot switch for axis release



Maintenance unit



Universal holding fixture
HGH-U2



Tool holding fixture KK



Membrane keyboard

We reserve the right to make technical changes.