



Re-defining Intelligence

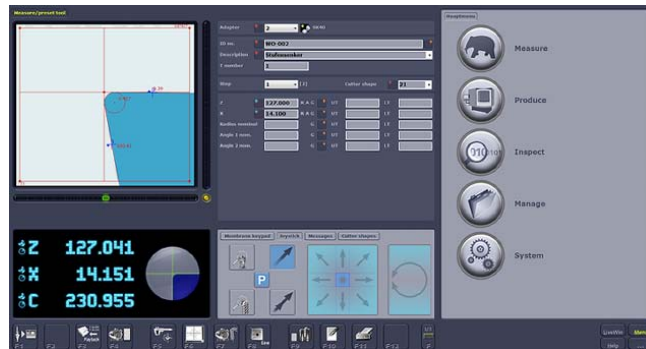
»pilot 3.0«

ZOLLER »pilot 3.0« represents a genuine landmark in the software development for tool presetter and measuring machines. Developed by applying the latest insights in

optimum man-machine interaction, the new high-contrast display highlights important information, facilitates orientation and means less pressure on the

eyes of the user. As a result, users can operate their machines quickly, easily and without enduring fatigue - an intuitively correct system delivering totally correct results.

### Measuring + Presetting



### Experience new ease of use

- ✓ *»elephant« technology for measuring and presetting without any data entry or prior knowledge*
- ✓ *Measurement programs with photorealistic input dialog for measurement of complex tool geometries*
- ✓ *Automatic cutting edge shape recognition for fast and precise measurement results*
- ✓ *Over 200 cutter shapes to measure any cutting edge geometry*

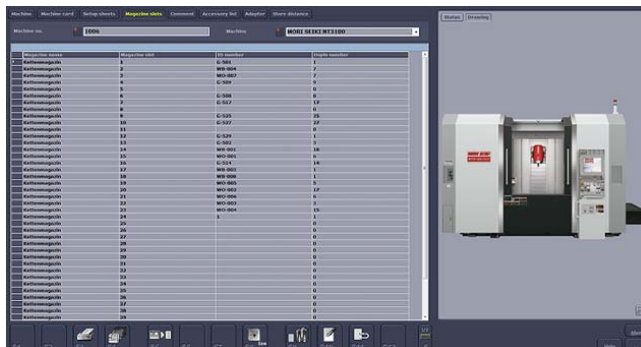
We reserve the right to make technical changes.

**ZOLLER**  
expect great measures



Re-defining Intelligence  
»pilot 3.0«

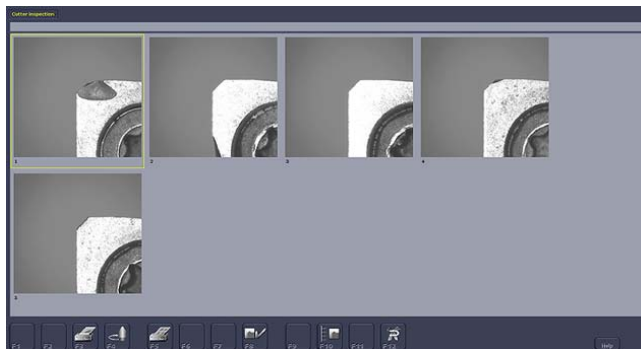
## Production



### Define production processes efficiently

- ✓ Measure lists of tools at the push of a button and transfer them directly to the machine tool
- ✓ »cetus« tool exchange list for calculating the tool requirement on the machine tool and for determining the tools to be exchanged on the machine tools

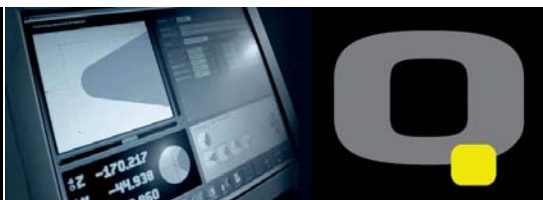
## Inspection



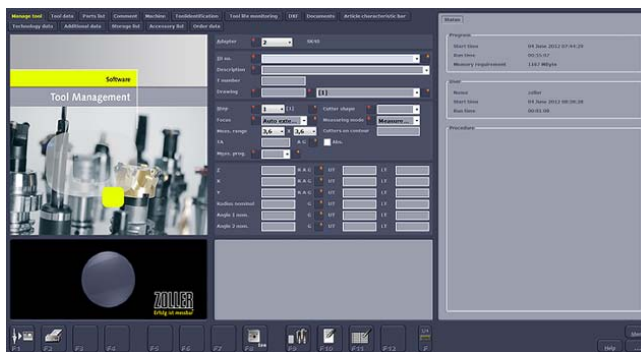
### Trust is good, control is better

- ✓ Adjustable intensity LED lighting for brilliant cutting edge display and inspection
- ✓ Inspect and measure tools in transmitted and incident light with »metis« tool inspection and measurement
- ✓ Simple creation of test reports for detailed documentation

We reserve the right to make technical changes.



## Manage

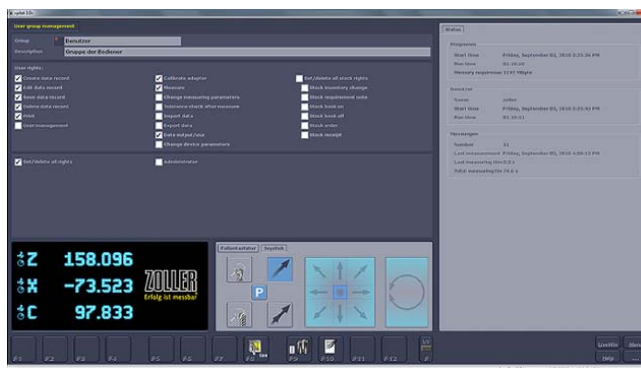


Create order by organization

Management of:

- Tools
- Individual components
- Tool Lists
- DIN 4000 subject characteristics
- Graphics
- Storage
- NC programs
- Ordering Systems

## System



The correct setting

Here you can carry out system setting and find useful information:

- User settings
- User rights management
- Data import/export settings
- Parameter settings for special functions
- Information on servicing and maintenance

We reserve the right to make technical changes.

# ZOLLER

expect great measures



## Re-defining Intelligence

### »pilot 3.0«

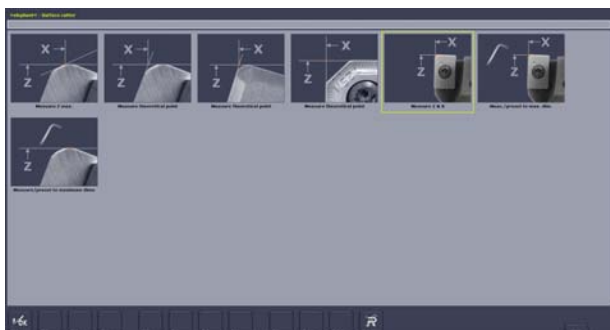
## Product Highlights



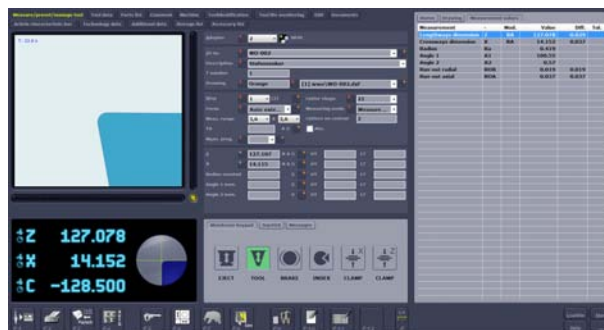
Intuitive operation, the starting menu is oriented along the tasks that the operator needs to fulfil. Your benefit: easy orientation and use of the software according to field of application and requirements.



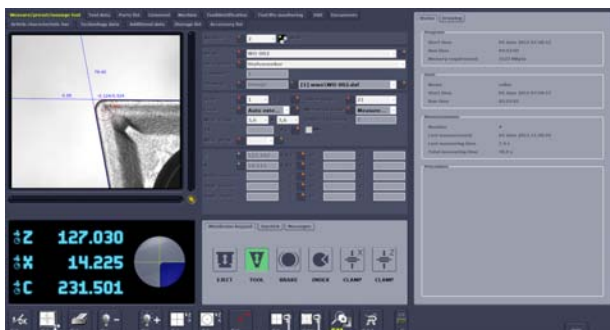
Step 1: Select type of tool from the image catalog of standard tools.



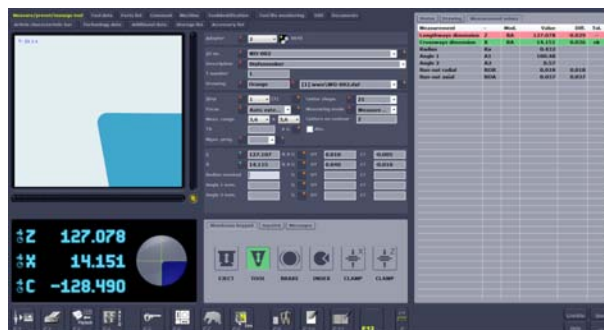
Step 2: Confirm selection of measuring or presetting task.



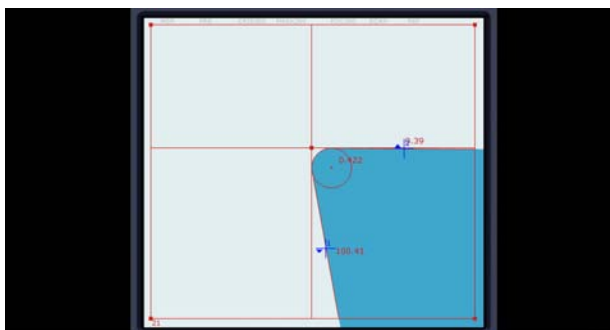
Step 3: Start measuring procedure, finished! Detailed overview of the measured results.



Cutting edge inspection, indentations and signs of wear can be detected in time via the live image for right-hand cutting tools.



Graphical user interface, With self-explanatory function keys specifically designed with the workshop environment in mind.



Dynamic crosshairs, Instantly aligns automatically with the cutting edge as it appears on camera and measures.



Automatic cutter shape detection, The cutting geometries are recognized automatically and only suitable measuring routines are offered.

We reserve the right to make technical changes.

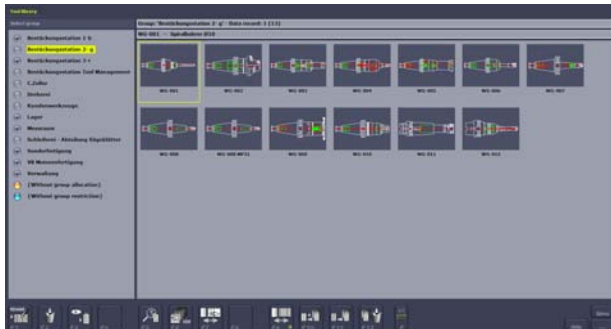
# ZOLLER

expect great measures



Re-defining Intelligence  
»pilot 3.0«

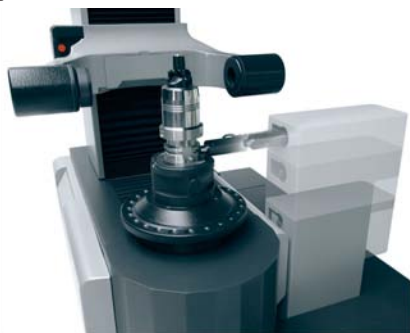
## Product Highlights



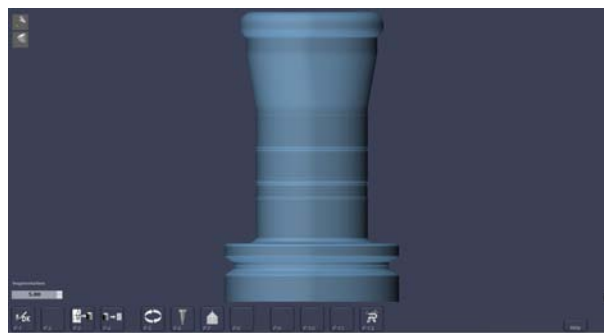
Adapter and tool management, For joint use of a data base for all compatible ZOLLER presetting and measuring machines.



Automatic zero point control, This ZOLLER technology assures using the correct zero point prior to measuring.



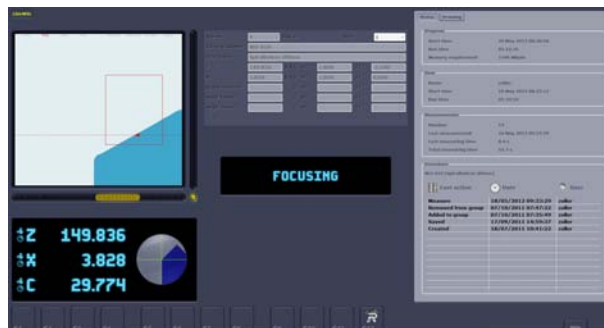
Tool identification (TI), Reading and writing of code carriers to transfer tool data electronically and error-free.



3D scan for collision control, Automatic generation of drawings and 3D models of rotation-symmetric tools for external collision control.



Tolerance check automatically checks the dimensional correctness of the measured parameters and provides these to the operator in a clear and unmistakable manner.



Autofocus, Mechanics and software for automatic, operator-independent and process-safe focusing of tool cutting edges for fully automated measurement of multi-insert tools.



CNC-drive of axes, Automatic, operator-independent and safe positioning of the axes into the target position. The operator can stop the axes manually at any time - any risk of injury is precluded!

We reserve the right to make technical changes.



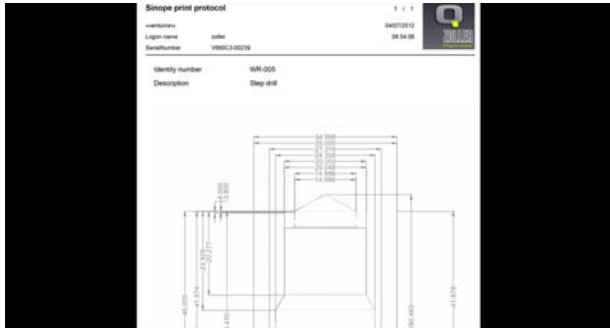
## Inspection Programs



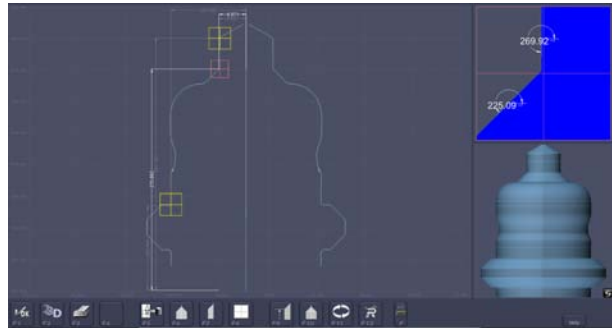
»apus« editable inspection protocol, Documented quality and dimensioned drawings, variable layout.



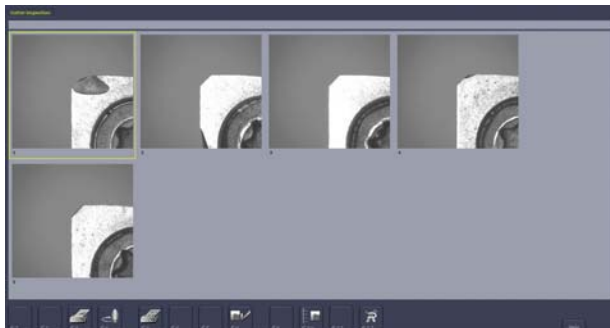
Documentation, Saves measured results and provides protocols or an analysis for all variants of measured values.



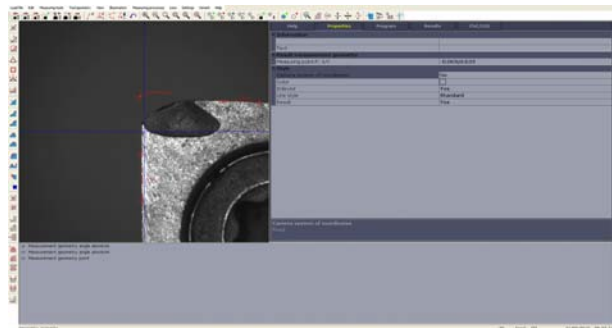
Documentation, Saves measured results and provides protocols or an analysis for all variants of measured values.



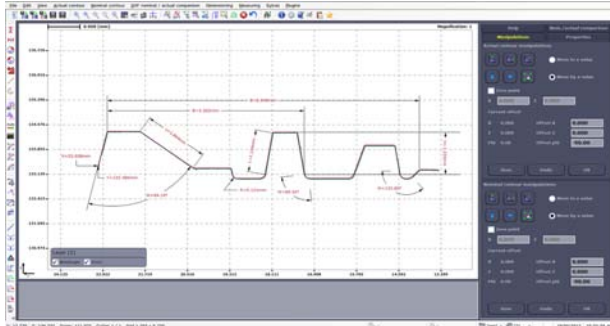
Drawing generator »sinope«, Automatically generates drawings from the determined measured values.



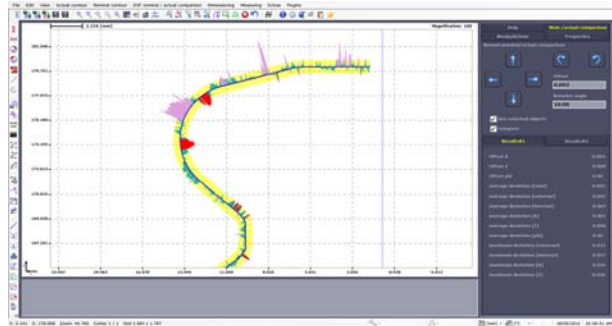
Automatic cutting edge inspection »aesc«, Automatic imaging of several cutting edges under incident light for tool inspection.



Tool analysis »metis«, Software for universal measurement of contours, radii, angles, distances, wear, under incident light for documentation.



With the contour measurement »lasso«, arbitrary, rotation-symmetric tool or workpiece geometries can be scanned, measured and analysed via a target/actual comparison.



Contour measurement »lasso«, For variance comparison via tolerance band and best fit to scanned contours.

We reserve the right to make technical changes.

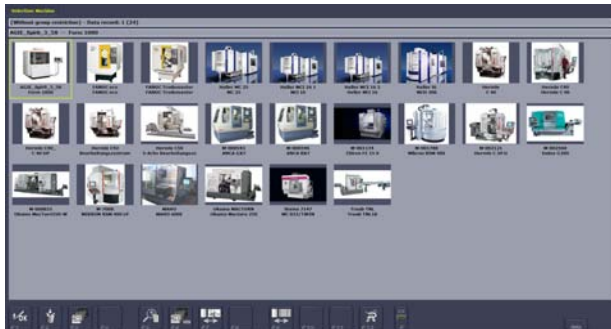
# ZOLLER

expect great measures



Re-defining Intelligence  
»pilot 3.0«

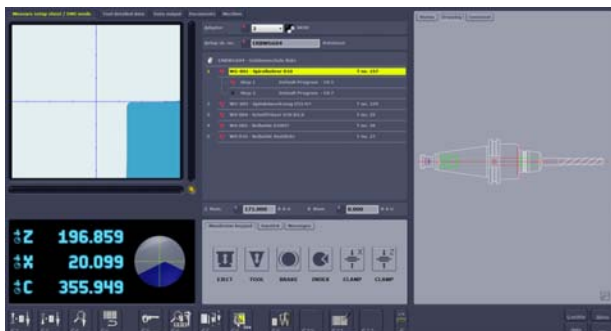
## Data Input / Output



Output formats CNC control-adequate calculation and output of actual data.



System-guided measuring programs with photo-realistic input dialog. For example, largest cutting edge on milling heads, concentricity and run-out, theoretical point on drills, etc.



System-guided measuring programs, Measuring program for measuring length, width, radius, angle 1, angle 2, run-out and concentricity

## Interfaces



Interface num, Interface for tool grinding machines with NUMROTOplus software as of software release 2.6.2. for the fully automated measurement of tools without requiring programming effort.



Interfaces, For smooth exchange of target and actual tool data.

We reserve the right to make technical changes.