



**Shrinking in record time**  
**»powerShrink«**

ZOLLER »powerShrink« is the inductive shrink-clamping unit for HSS and carbide tools. It allows you considerably to reduce the setup times in your production facility. Within a maximum of 10 seconds your tools will be shrink-clamped, while unclamping and cooling ready for production takes only 40 seconds longer. You benefit from a highly accurate concentricity, long tool lives and reduced tooling costs.



- ✓ Safe operation
- ✓ Robust and able to withstand shop floor conditions
- ✓ High-performance cooling unit
- ✓ Versatile adaptation to your production
- ✓ Integrated workbench
- ✓ »toolSet system«
- ✓ Easy and fast changes
- ✓ Universal applicability
- ✓ Protection of operator's health
- ✓ Induction coil

Technical Data	Inductor	Stop Discs	5 pcs., water cooled	Rotary Plate
»powerShrink Basic«	10kVA	D3-32		
»powerShrink Economic«	13kVA	D3-32		
»powerShrink Economic«	13kVA/NG, adjustable inductor	D3-32		
»powerShrink Economic Plus«	13kVA	D3-32	inclusive	
»powerShrink Economic Plus«	13kVA/NG, adjustable inductor	D3-32	inclusive	
»powerShrink Comfort«	13kVA	D3-32	inclusive	inclusive
»powerShrink Comfort«	13kVA/NG, adjustable inductor	D3-32	inclusive	inclusive
»powerShrink Profi Plus«	13kVA/NG, adjustable inductor	D3-32	inclusive	inclusive
	20kVA	D40-50		
»powerShrink Nano«	13kVA	D3-16		

We reserve the right to make technical changes.

**ZOLLER**  
expect great measures®



Shrinking in record time  
»powerShrink«



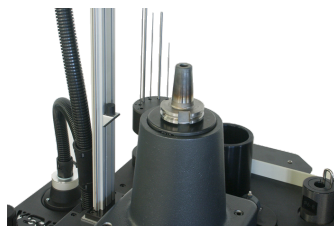
**Shrinking Unit**



**Induction Coil**



**High-performance Cooling Unit**



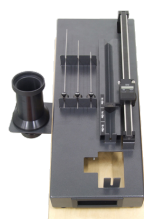
**Holding Fixtures**



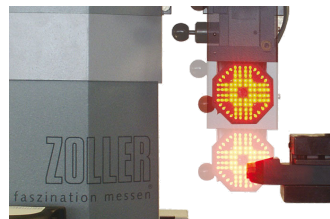
**»showerCooler«**



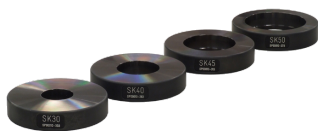
**Integrated Workbench**



**»toolSet System«**



**Gas Suction Device**



**Centering collets for ISO,  
HSK, Kennametal and Capto**

We reserve the right to make technical changes.