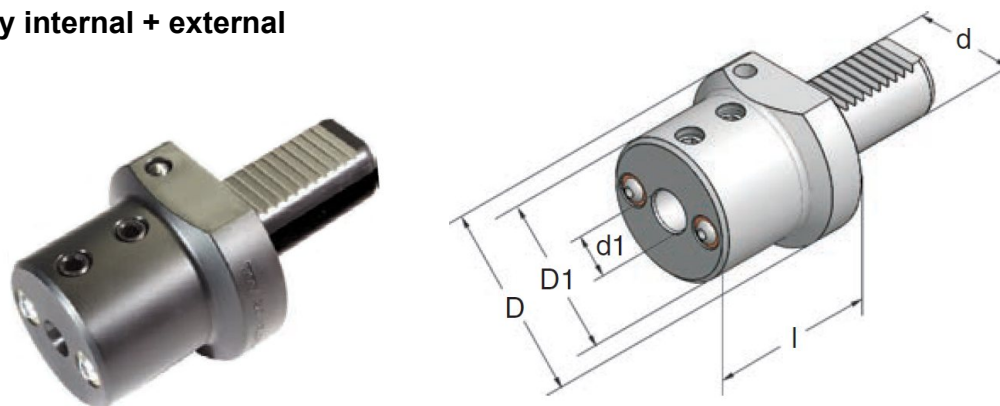


Toolholders for CNC machines DIN 69880 / DIN ISO 10889

Boring bar holders form E2

Coolant supply internal + external



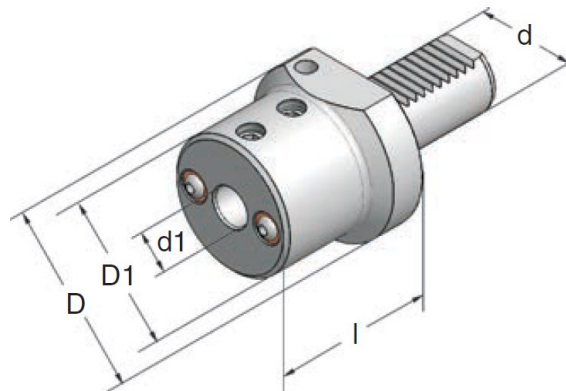
l_1 = drill depth

Art.-Nr.	Type	d	d1	D	D1	l	l1	Art.-Nr.	Type	d	d1	D	D1	l	l1
16.06.290	E2-16x06x44	16	6	40	40	44	39	50.12.290	E2-50x12x90	50	12	98	56	90	156
16.08.290	E2-16x08x44	16	8	40	40	44	39	50.16.290	E2-50x16x90	50	16	98	56	90	156
16.10.290	E2-16x10x44	16	10	40	40	44	39	50.20.290	E2-50x20x90	50	20	98	56	90	156
16.12.290	E2-16x12x44	16	12	40	40	44	39	50.25.290	E2-50x25x90	50	25	98	65	90	156
16.16.290	E2-16x16x44	16	16	40	40	44	39	50.30.290	E2-50x30x90	50	30	98	68	90	110
								50.32.290	E2-50x32x90	50	32	98	68	90	110
20.06.290	E2-20x06x50	20	6	50	40	50	84	50.40.290	E2-50x40x90	50	40	98	80	90	81
20.08.290	E2-20x08x50	20	8	50	40	50	84	50.50.290	E2-50x50x95	50	50	98	90	95	83
20.10.290	E2-20x10x50	20	10	50	40	50	45								
20.12.290	E2-20x12x50	20	12	50	40	50	45	60.12.290	E2-60x12x 90	60	12	123	52	90	174
20.16.290	E2-20x16x50	20	16	50	44	50	45	60.16.290	E2-60x16x 90	60	16	123	60	90	174
20.20.290	E2-20x20x50	20	20	50	49	50	45	60.20.290	E2-60x20x 90	60	20	123	60	90	174
20.25.290	E2-20x25x50	20	25	54	54	50	45	60.25.290	E2-60x25x 90	60	25	123	65	90	174
								60.30.290	E2-60x30x 90	60	30	123	70	90	172
25.06.290	E2-25x06x50	25	6	58	40	50	84	60.32.290	E2-60x32x 90	60	32	123	70	90	172
25.08.290	E2-25x08x50	25	8	58	40	50	84	60.40.290	E2-60x40x 90	60	40	123	80	90	110
25.10.290	E2-25x10x50	25	10	58	40	50	84	60.50.290	E2-60x50x100	60	50	123	90	100	88
25.12.290	E2-25x12x50	25	12	58	40	50	45	60.60.290	E2-60x60x100	60	60	123	100	100	88
25.16.290	E2-25x16x50	25	16	58	40	50	45		INCH						
25.20.290	E2-25x20x50	25	20	58	58	50	45	329206	E2-30x3/8"x60	30	3/8"	68	50	60	106
25.25.290	E2-25x25x50	25	25	58	58	50	45	330206	E2-30x1/2"x60	30	1/2"	68	50	60	106

We reserve the right to make technical changes.

Boring bar holders form E2

Coolant supply internal + external



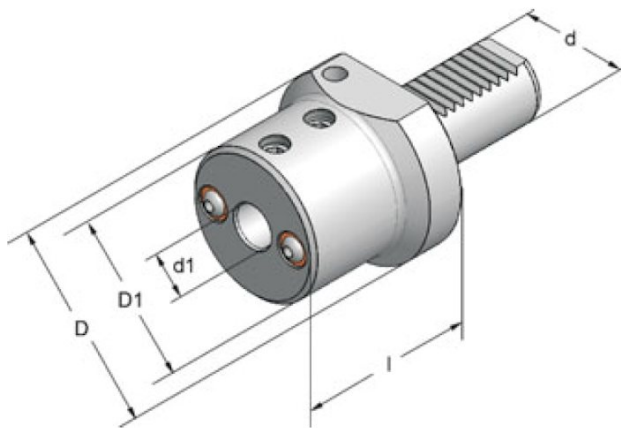
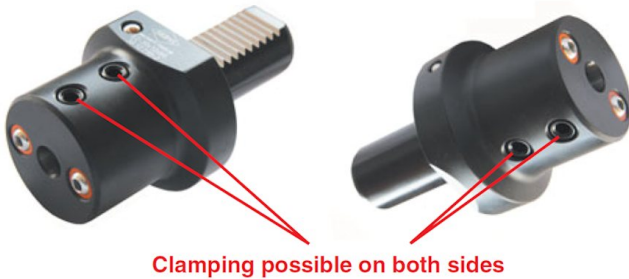
l1 = drill depth

Art.-Nr.	Type	d	d1	D	D1	l	l1	Art.-Nr.	Type	d	d1	D	D1	l	l1		
30.06.290	E2-30x06x60	30	6	68	50	60	106	INCH									
30.08.290	E2-30x08x60	30	8	68	50	60	106	329206	E2-30x3/8"x60	30	3/8"	68	50	60	106		
30.10.290	E2-30x10x60	30	10	68	50	60	106	330206	E2-30x1/2"x60	30	1/2"	68	50	60	106		
30.12.290	E2-30x12x60	30	12	68	50	60	106	331206	E2-30x5/8"x60	30	5/8"	68	55	60	106		
30.16.290	E2-30x16x60	30	16	68	55	60	106	332206	E2-30x3/4"x60	30	3/4"	68	55	60	55		
30.20.290	E2-30x20x60	30	20	68	55	60	55	333206	E2-30x1" x60	30	1"	68	55	60	55		
30.25.290	E2-30x25x60	30	25	68	55	60	55	334206	E2-30x1 1/4"x65	30	1 1/4"	68	68	65	57		
30.30.290	E2-30x30x65	30	30	68	68	65	57	335206	E2-30x1 1/2"x75	30	1 1/2"	74	74	75	65		
30.32.290	E2-30x32x65	30	32	68	68	65	57										
30.40.290	E2-30x40x75	30	40	74	74	75	66	429206	E2-40x3/8"x75	40	3/8"	83	50	75	130		
								430206	E2-40x1/2"x75	40	1/2"	83	50	75	130		
40.08.290	E2-40x08x75	40	8	83	50	75	130	431206	E2-40x5/8"x75	40	5/8"	83	55	75	130		
40.10.290	E2-40x10x75	40	10	83	50	75	130	432206	E2-40x3/4"x75	40	3/4"	83	55	75	130		
40.12.290	E2-40x12x75	40	12	83	50	75	130	433206	E2-40x1" x75	40	1"	83	60	75	66		
40.16.290	E2-40x16x75	40	16	83	55	75	130	434206	E2-40x1 1/4"x75	40	1 1/4"	83	72	75	66		
40.20.290	E2-40x20x75	40	20	83	55	75	130	435206	E2-40x1 1/2"x85	40	1 1/2"	83	72	85	73		
40.25.290	E2-40x25x75	40	25	83	60	75	66	436206	E2-40x1 3/4"x85	40	1 3/4"	83	83	85	73		
40.30.290	E2-40x30x75	40	30	83	72	75	66										
40.32.290	E2-40x32x75	40	32	83	72	75	66	530206	E2-50x1/2"x90	50	1/2"	98	56	90	156		
40.40.290	E2-40x40x85	40	40	83	83	85	73	531206	E2-50x5/8"x90	50	5/8"	98	56	90	156		
								532206	E2-50x3/4"x90	50	3/4"	98	56	90	156		
								533206	E2-50x1" x90	50	1"	98	65	90	156		
								534206	E2-50x1 1/4"x90	50	1 1/4"	98	68	90	110		
								535206	E2-50x1 1/2"x90	50	1 1/2"	98	68	90	110		
								536206	E2-50x1 3/4"x90	50	1 3/4"	98	80	90	81		
								537206	E2-50x2" x95	50	2"	98	90	95	83		

We reserve the right to make technical changes.

Boring bar holders form E2

Coolant supply internal + external



l1 drill depth

Art.-Nr.	Type	d	d1	D	D1	l	l1
30.10.290-2	E2-30x10x60	30	10	68	50	60	106
30.12.290-2	E2-30x12x60	30	12	68	50	60	106
30.16.290-2	E2-30x16x60	30	16	68	55	60	106
30.20.290-2	E2-30x20x60	30	20	68	55	60	55
30.25.290-2	E2-30x25x60	30	25	68	55	60	55
30.32.290-2	E2-30x32x65	30	32	68	68	65	57
40.08.290-2	E2-40x08x75	40	08	83	50	75	130
40.10.290-2	E2-40x10x75	40	10	83	50	75	130
40.12.290-2	E2-40x12x75	40	12	83	50	75	130
40.16.290-2	E2-40x16x75	40	16	83	55	75	130
40.20.290-2	E2-40x20x75	40	20	83	55	75	130
40.25.290-2	E2-40x25x75	40	25	83	60	75	66
40.32.290-2	E2-40x32x75	40	32	83	72	75	66
40.40.290-2	E2-40x40x85	40	40	83	83	85	73

We reserve the right to make technical changes.